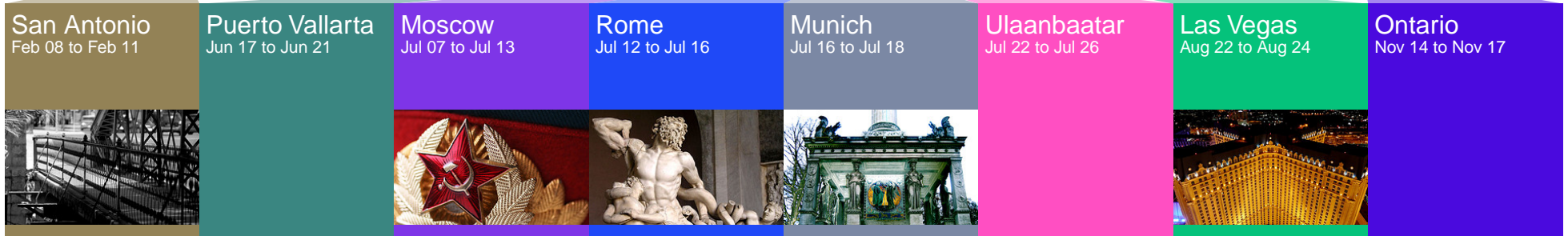
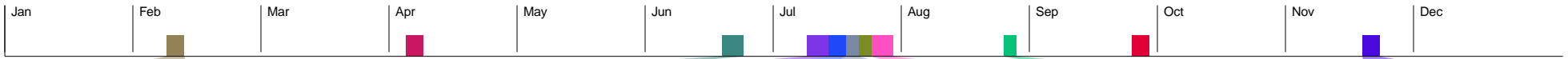
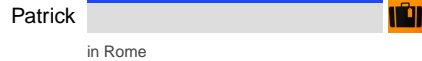


2008 Personal annual report for Brian Ghidinelli



You took 11 trips in 2008, which added up to 51,306 km or 14% of the distance to the moon.

In 2008, you mostly coincided with:




In 2008, Dopplr alerted its users to more than a quarter of a million coincidences. We couldn't find many coincidences for you in 2008. This might change in 2009 if you share your travel plans with more people you trust. Did you know you can easily connect with people you know on Facebook, LinkedIn, Twitter, and Flickr (amongst others)?
Go to <http://dplr.it/invite> to get started.

In 2008, you spent



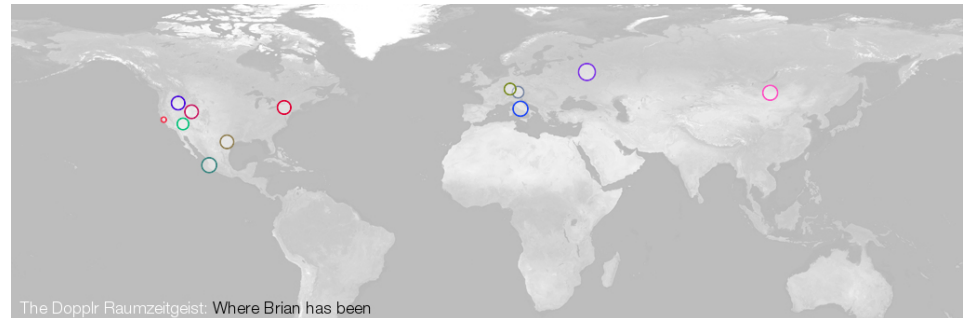
You have 24 travellers in your network. They travelled a total of 838,919 km in 2008, and everyone on Dopplr travelled a total of 1331.4 million km or 8.9 AU in 2008: the approximate distance to Saturn from the Earth as of January 2009.



Your personal velocity for 2008 was 5.85 km/h, which is about the same as a duck.

The 5 most popular cities in your network are Amsterdam, Munich, New York, Washington and Las Vegas.

The furthest distance you travelled was to Moscow (9,453 km from San Francisco), which is the 64th most popular city on Dopplr. The shortest distance you travelled was to Hockenheim (258 km from Munich).



The Dopplr Raumzeitgeist: Where Brian has been

You spent the longest in Moscow, Alexei Zagorovskiy has a tip:

There is a chain of self-service cafes called Mu-Mu (M_--) with locations spread across the city. Good food, great selection & low prices.
<http://www.cafemumu.ru/contacts.php>
See more on the city page for Moscow on Dopplr.

We couldn't calculate the carbon footprint of your travels for 2008 because at the moment, you're not using that feature. In 2008, the average carbon of those who are tracking the impact of their travels on Dopplr was 6,413 kg CO₂.
Go to <http://dplr.it/carbon> to get started.